

The Daily

January 14, 2025





Pullback rally on cards – Immediate resistance at 23340

American Stocks ended mixed - with the S&P 500 shaking off earlier losses to post its biggest intraday comeback in four months. The technology-heavy Nasdaq lagged the broader S&P 500 and Dow Jones.

Oil futures settled Monday at their highest in about five months, buoyed by expectations that the latest U.S. sanctions on Russian oil will lead to tighter global supplies of the commodity.

Market attention now turns to Wednesday's December Consumer Price Index (CPI) report, where analysts anticipate an uptick in headline inflation, partially attributed to elevated energy costs. This potential resurgence in inflation represents a significant concern for equity markets, particularly as the Federal Reserve has already scaled back its projected interest rate cuts in response to higher-than-expected inflation forecasts.

The fixed income market continues to face pressure, with the U.S. 10-year Treasury yield reaching 4.79%, marking its highest level since October 2023.

In Indian markets, HCL Technologies reported Q3FY25 results aligned with market expectations. The company upgraded its revenue growth guidance to 4.5-5% from the previous 3.5-5% year-over-year in constant currency terms, while maintaining its EBIT margin guidance at 18-19% for FY25E.

The Indian rupee experienced its most severe decline in nearly two years, depreciating 62 paise to an all-time low of 86.59 against the U.S. dollar, pressured by a strengthening dollar index and rising crude oil prices.

The Nifty extended its losing streak to a fourth consecutive session on January 13, declining 345 points (1.47%) to close at 23,085, influenced by weak global market sentiment.

Derivatives market cues suggest a potential short-term recovery in the Nifty, with call option implied volatility surpassing that of puts for the first time during this correction. The index faces immediate resistance at 23,340.



| Global Equity Indices | | | |
|-----------------------|--------|-------------|----------|
| | Close | Abs. Change | % Change |
| Indian Indices | | | |
| Sensex | 76,330 | -1048.9 ▼ | -1.36% |
| Nifty | 23,086 | -345.5 ▼ | -1.47% |
| Midcap | 52,390 | -2195.4 ▼ | -4.02% |
| Small cap | 16,922 | -723.5 ▼ | -4.10% |
| US Indices | | | |
| Dow Jones | 42,297 | 358.7 ▲ | 0.86% |
| S&P 500 | 5,836 | 9.2 ▲ | 0.16% |
| Nasdaq | 19,088 | -73.5 ▼ | -0.38% |
| European Indices | | | |
| FTSE | 8,224 | -24.3 ▼ | -0.29% |
| DAX | 20,133 | -81.9 ▼ | -0.41% |
| CAC | 7,409 | -22.4 ▼ | -0.30% |
| Asian Indices | | | |
| Shanghai | 3,204 | 35.7 ▲ | 1.13% |
| Hang Seng | 19,061 | -3.6 ▼ | -0.02% |
| Nikkei | 38,470 | -720.8 ▼ | -1.84% |

| Indices Futures | | | |
|------------------|--------|-------------|------------|
| | Close | Abs. Change | % Change |
| Indian Indices | | | |
| IFSC Nifty | 23,268 | 131 ▲ | 0.57% |
| US Indices | | | |
| Dow Jones | 42,579 | 56.0 ▲ | 0.13% |
| S&P 500 | 5,889 | 14.8 ▲ | 0.25% |
| Nasdaq | 21,037 | 90.0 ▲ | 0.43% |
| European Indices | | | |
| FTSE | 8,229 | -0.5 ▼ | -0.01% |
| DAX | 20,339 | 71.0 ▲ | 0.35% |
| Asian Indices | | | |
| Shanghai | 3,780 | 64.8 ▲ | 1.74% |
| Hang Seng | 19,089 | 187.0 ▲ | 0.99% |
| Nikkei | 38,470 | #VALUE! | ## #VALUE! |

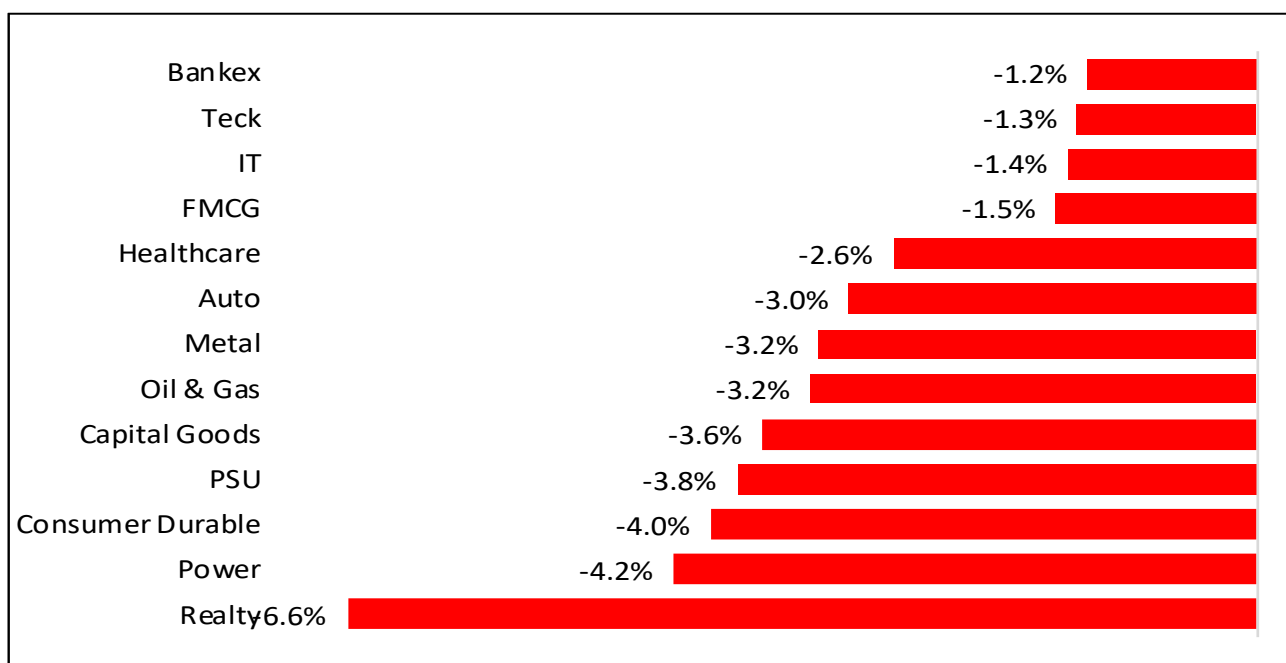


Nifty50 Index Contributors

| Top Five (Positive Contributors) | | |
|----------------------------------|--------|-------|
| Stock | Points | % |
| TCS | 5.8 | 0.02% |
| AXISBANK | 5.5 | 0.02% |
| HINDUNILVR | 1.8 | 0.01% |
| INDUSINDBK | 0.6 | 0.00% |
| DUMMYITC | 0.0 | 0.00% |

| Bottom Five (Negative Contributors) | | |
|-------------------------------------|--------|--------|
| Stock | Points | % |
| HDFCBANK | -43.9 | -0.19% |
| ICICIBANK | -31.6 | -0.13% |
| LT | -18.8 | -0.08% |
| M&M | -18.4 | -0.08% |
| TRENT | -17.8 | -0.08% |

BSE Sectoral Leaders & Laggards

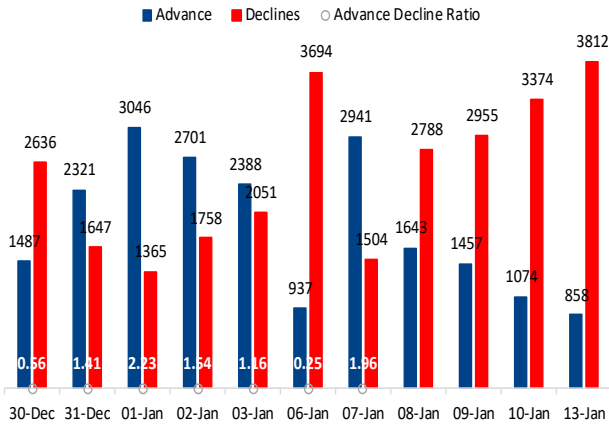


Nifty50 Index Top Pops and Drops

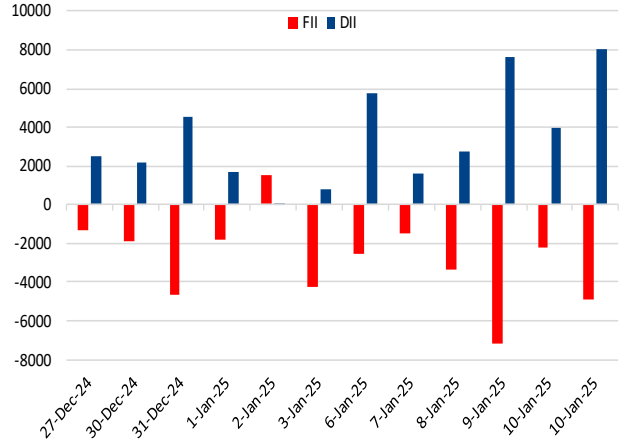
| Nifty50 Top Five Gainers | | | | Nifty50 Top Five Losers | | | |
|--------------------------|---------|----------|-----------|-------------------------|---------|----------|------------|
| Symbol | LTP | % Change | Volume | Symbol | LTP | % Change | Volume |
| TCS | 4,299.0 | 0.78% | 4,003,771 | ADANIEN | 2,227.0 | -6.21% | 1,559,903 |
| INDUSINDBK | 943.0 | 0.58% | 8,752,532 | TRENT | 6,228.5 | -5.40% | 1,068,954 |
| AXISBANK | 1,045.5 | 0.46% | 7,180,930 | BPCL | 265.5 | -4.39% | 10,488,655 |
| HINDUNILVR | 2,445.1 | 0.12% | 2,595,013 | BEL | 259.2 | -4.37% | 19,429,753 |
| - | - | - | - | POWERGRID | 287.5 | -4.09% | 19,474,228 |



BSE Advance & Declines



Institutional Activities



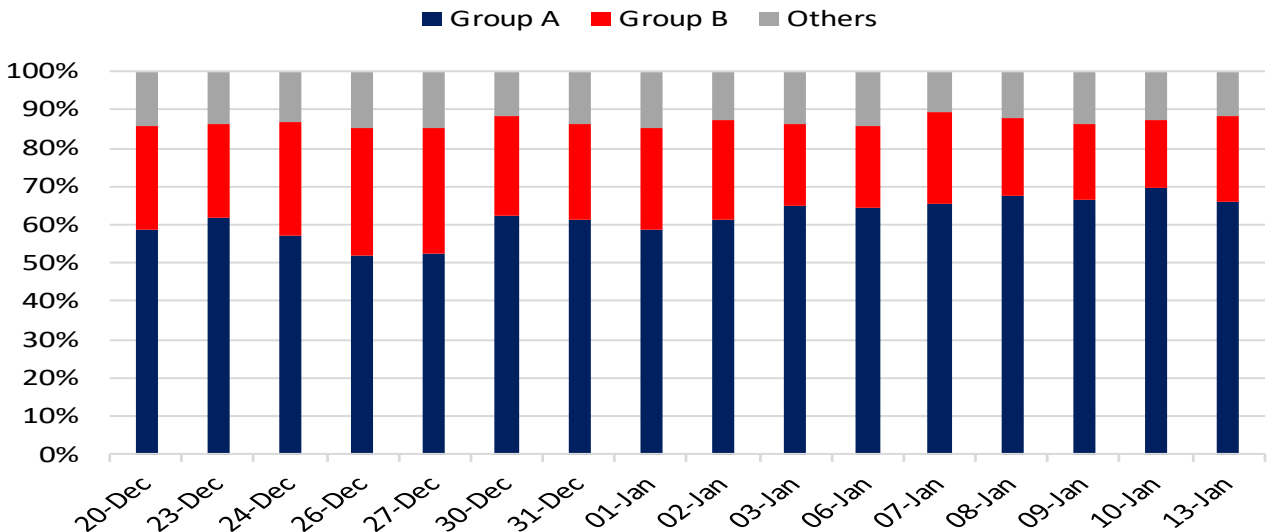
52 Week High Stocks

| | 13-Jan-25 | 10-Jan-25 |
|--|-----------|--------------|
| BSE Universe | 156 | 139 |
| BSE Group A Stocks Hitting 52 Week High | | |
| Stocks | Price | 52 Week High |
| HCLTECH | 1985.25 | 2011 |
| KIMS | 618.65 | 674 |
| VIJAYA | 1203.95 | 1276.75 |

52 Week Low Stocks




| | 13-Jan-25 | 10-Jan-25 |
|---|-----------|-------------|
| BSE Universe | 531 | 277 |
| BSE Group A Stocks Hitting 52 Week Low | | |
| Stocks | Price | 52 Week Low |
| SJVN | 90.65 | 90.15 |
| BHEL | 192.6 | 191.8 |
| CANBK | 88.5 | 87.75 |
| CENTRALBK | 46.9 | 46.65 |
| IDBI | 66.18 | 65.89 |

BSE Cash Market Turnover Participant-wise





News Highly Sensitive to Stock Price

| Impact | Stock | News |
|---|-----------------------------------|--|
|  | Afcons Infrastructure Ltd. | Afcons Infrastructure has emerged as the lowest bidder (L1) for constructing the Pune Ring Road (East) Packages PRR E5 and E7, awarded by the Maharashtra State Road Development Corporation Ltd. (MSRDC). The project involves developing an access-controlled road in Pune, with a total bid project cost of Rs 4,787.2 crore, excluding GST. The construction will be executed under the EPC mode, with a completion timeline of 36 months. |
|  | Angel One | The company reported 8% growth in net profit at Rs 281 crore (\$32.4 million) from a year earlier. On a sequential basis, profit fell 33.5%. Angel One's total client base rose nearly 52 per cent in the third quarter to 29.5 million. Revenue from operations increased 19.2% YoY at Rs 1262.2 crore. Board declared interim dividend of Rs 11 per share for FY25. |
|  | Anand Rathi Wealth | Anand Rathi Wealth Ltd reported 33.2% jump in consolidated net profit at Rs 77.3 crore in the third quarter of the current fiscal year. Revenue from operations jumped 26.6% to Rs 237 crore in the reported quarter over Rs 187.2 crore in the same period of the previous financial year. Board recommended bonus issue of 1:1. The assets under management (AUM) increased 39%, reaching Rs 76,402 crore as on Dec-2024. |



| Stock | News |
|-------|------|
|-------|------|

Oil & Gas

India does not expect disruptions in Russian oil supply for the next two months. U.S.-sanctioned tankers can discharge crude until March. Russia may offer deeper discounts to comply with the \$60 per barrel price cap.

HCL Tech numbers were inline with estimates in Q3FY25. The company revised its revenue guidance and growth is expected between 4.5-5% from 3.5% and 5% YoY in CC terms and maintained the EBIT margin at 18% to 19% for FY25E.

Reported numbers: Consolidated revenue grew by 3.6% QoQ and 5.1% YoY to Rs 29,890 crore in Rupee terms. USD Revenue of \$3,533M, up 2.5% QoQ & up 3.5% YoY, and Constant Currency (CC) Revenue up 3.8% QoQ & up 4.1% YoY. HCLTech Services CC Revenue up 2.2% QoQ & up 4.9% YoY in Q3FY25.

EBIT grew 8.6% QoQ and 3.1% YoY to Rs 5,821 crore vs. expectation of Rs 5,852 crore. Net profit was up by 8.4% QoQ and 5.6% YoY to Rs 4,594 crore in Q3FY25.

Operating metrics: On the vertical front, Financial Services contributed 20.3% (down 1.4% YoY), Manufacturing contributed 19.1% (unchanged YoY), Lifesciences & Healthcare 15.5% (down 1.1% YoY), Technology & Services 13.3% (up 7.6% YoY), Public Services contributed 8.9% (down 4.6% YoY), retail and CPG contributed 10.6% (up 17.2% YoY) and Telecom, Media & Entertainment contributed 12.3% to the revenue (up 33.1% YoY) in Q3FY25.

HCL Tech Q3FY25 results key takeaways

Client metrics: Strong client addition across all categories. On YoY basis, added two clients in US\$ 100 mn+, and, increased four clients in both US\$ 50 mn+ and US\$ 50 mn+ category. However, decreased two, three and six clients in US\$ 10 mn+ US\$ 5 mn+ clients and US\$ 1 mn+ clients, categories, respectively.

Deal pipeline: TCV of new deal wins at US\$ 2,095 mn in Q3FY25, vs. US\$ 2,218 mn in Q2FY25, US\$ 1,960 in Q1FY25 and US\$ 2,290 mn in Q4FY24.

Headcounts: Total headcount at 220,755 as on Dec 31, 2024 vs. 218,621 as on Sept 30, 2024. IT Services attrition (on LTM basis) stood at 13.2% in Q3FY25 vs. 12.9% in Q2FY25.



| Stock | News |
|------------------------------|--|
| | <p>Guidance for FY25E: HCL Tech CC Revenue growth is expected to be between 4.5% - 5.0% YoY and Services CC Revenue growth is expected to be between 4.5% - 5.0% YoY for FY25E. EBIT margin expected to be between 18.0% - 19.0% for FY25E.</p> |
| | <p>Dividend payout: The company has declared the 88th consecutive quarter in last 22 years of dividend pay-out, a dividend of Rs 18 per share including a special dividend of Rs 6 per share.</p> |
| <p>Delta Corp</p> | <p>Earnings and valuation: EPS stood at Rs 16.9 in Q3FY25, Rs 15.6 in Q2FY25, and Rs 15.7 in Q1FY25. At a CMP, the stock trades at 23.6x FY27E Earnings.</p> <p>Delta Corp Ltd reported 3.6% rise in consolidated net profit at Rs 35.7 crore in the quarter. PBT for the quarter stood at Rs 29 crore, as compared to Rs 50 crore, a year ago period. Revenue declined 7.5 percent to Rs 194.3 crore in the reported quarter.</p> |
| <p>PB Fintech</p> | <p>The Goods and Services Tax (GST) authorities on January 13 conducted a search at the Gurugram office of PB Fintech, the holding company of online insurance aggregator Policybazaar, people familiar with the development said. The operation involved detailed scrutiny of documents and records at the company's premises.</p> |
| <p>United Spirits</p> | <p>United Spirits Ltd announced a leadership transition as part of its CEO succession plan. After serving as Managing Director and CEO for four successful years, Hina Nagarajan will step down effective March 31, 2025, to take on a new role within the Diageo Group. The board has appointed Mr. Praveen Someshwar as Chief Executive Officer-Designate, effective March 1, 2025.</p> |
| <p>Zee Media</p> | <p>The company's board of directors has approved a plan to raise funds of up to Rs 400 crore via various instruments, including equity shares, convertible bonds, debentures, warrants, preference shares, or foreign currency convertible bonds (FCCBs).</p> |
| <p>Bajel Projects</p> | <p>Bajel Projects Ltd said that it has been awarded an EPC contract by Adani Energy Solutions Ltd (AESL) for the construction of a 400kV double-circuit (D/C) transmission line. The project, spanning 217 km, will connect Raipur in Chhattisgarh to Tiroda in Maharashtra using Quad ACSR Moose conductors.</p> |



| Stock | News |
|-------------------------------------|--|
| JSW Energy | JSW Energy has been declared the successful applicant for the resolution plan submitted for KSK Mahanadi Power Company Ltd (KMPCL) under the corporate insolvency resolution process (CIRP) of the Insolvency and Bankruptcy Code, 2016. |
| Himadri Speciality Chemicals | Revenue for the quarter grew 7.5% YoY at Rs 1131.8 crore. Net profit was up 31.5% YoY at Rs 141.9 crore. Company said that it plans to invest Rs 120 crore in a new facility to produce speciality products, funded through internal accruals. |



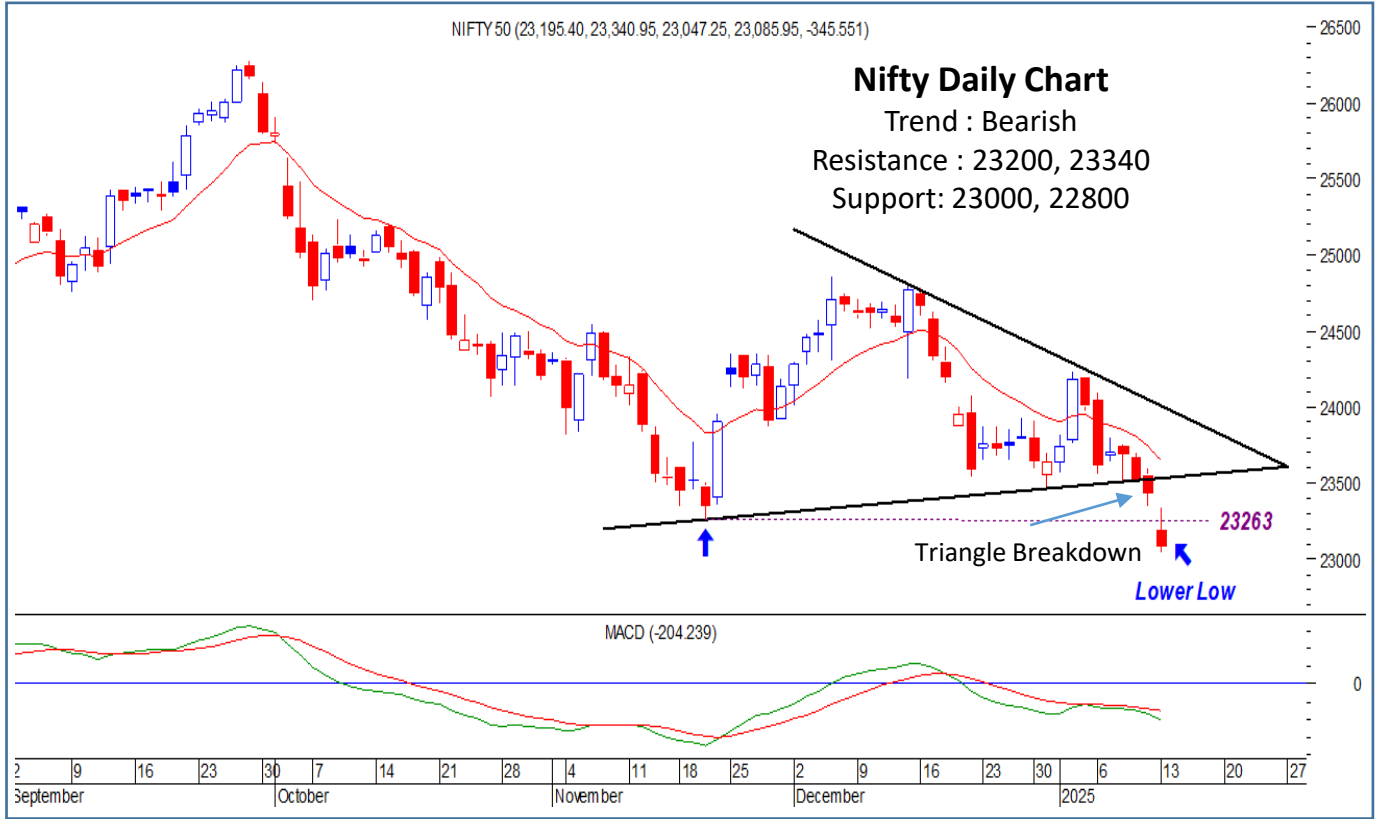
Key Events

China exports accelerate amid trade tensions, imports surprise

China's exports gained momentum in December, with imports also showing recovery, though strength at the year-end was in part fuelled by factories rushing inventory overseas as they braced for heightened trade risks under a Trump presidency. Exports have been a vital growth engine for the \$18 trillion economy, which is still burdened by a prolonged property crisis and shaky consumer confidence. While policymakers can find solace in recent policy measures keeping the economy on track for an "around 5%" growth target, challenges such as potential U.S. tariff hikes cloud the outlook for 2025.



Nifty : Closed Below Previous Swing Low; Downtrend Would Continue.



Nifty Auto: New Lower Low With Fresh MACD Sell Signal; Expect Further Weakness

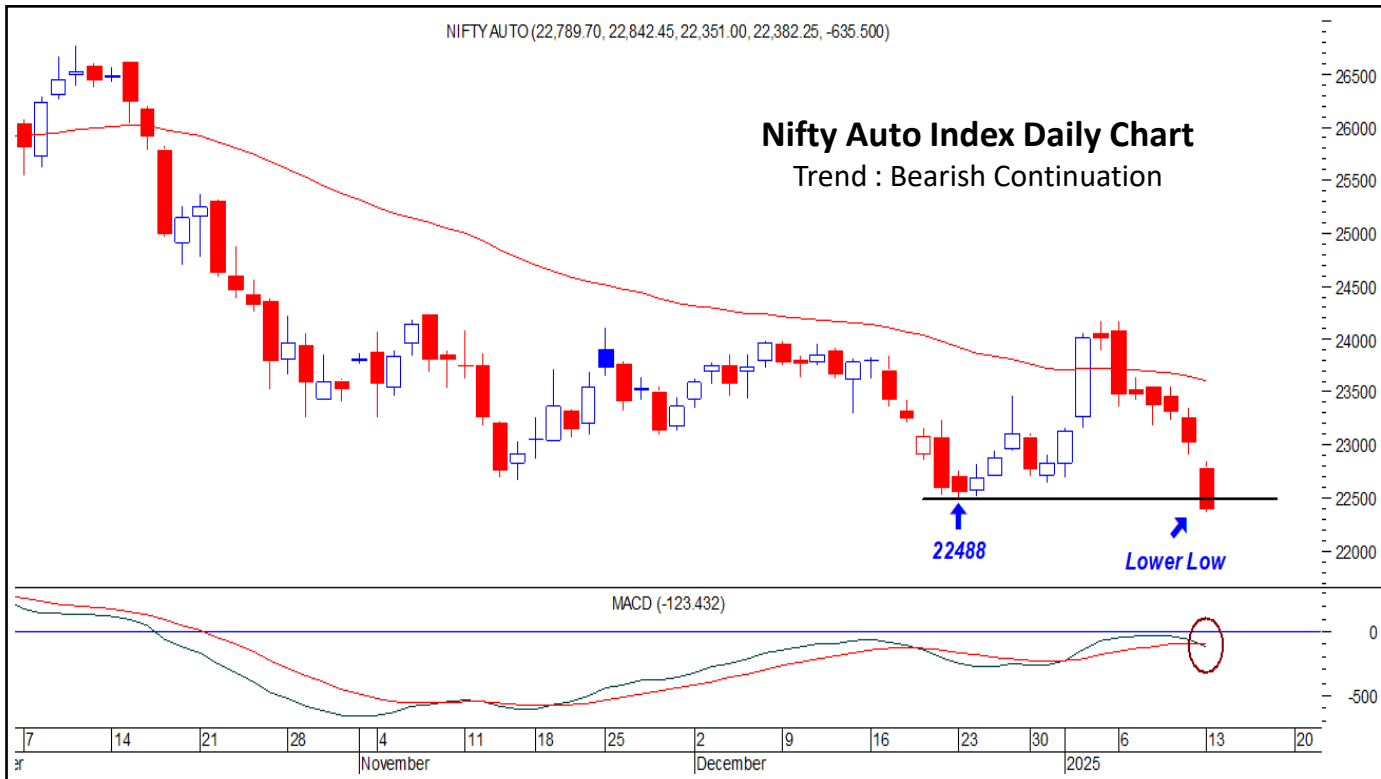




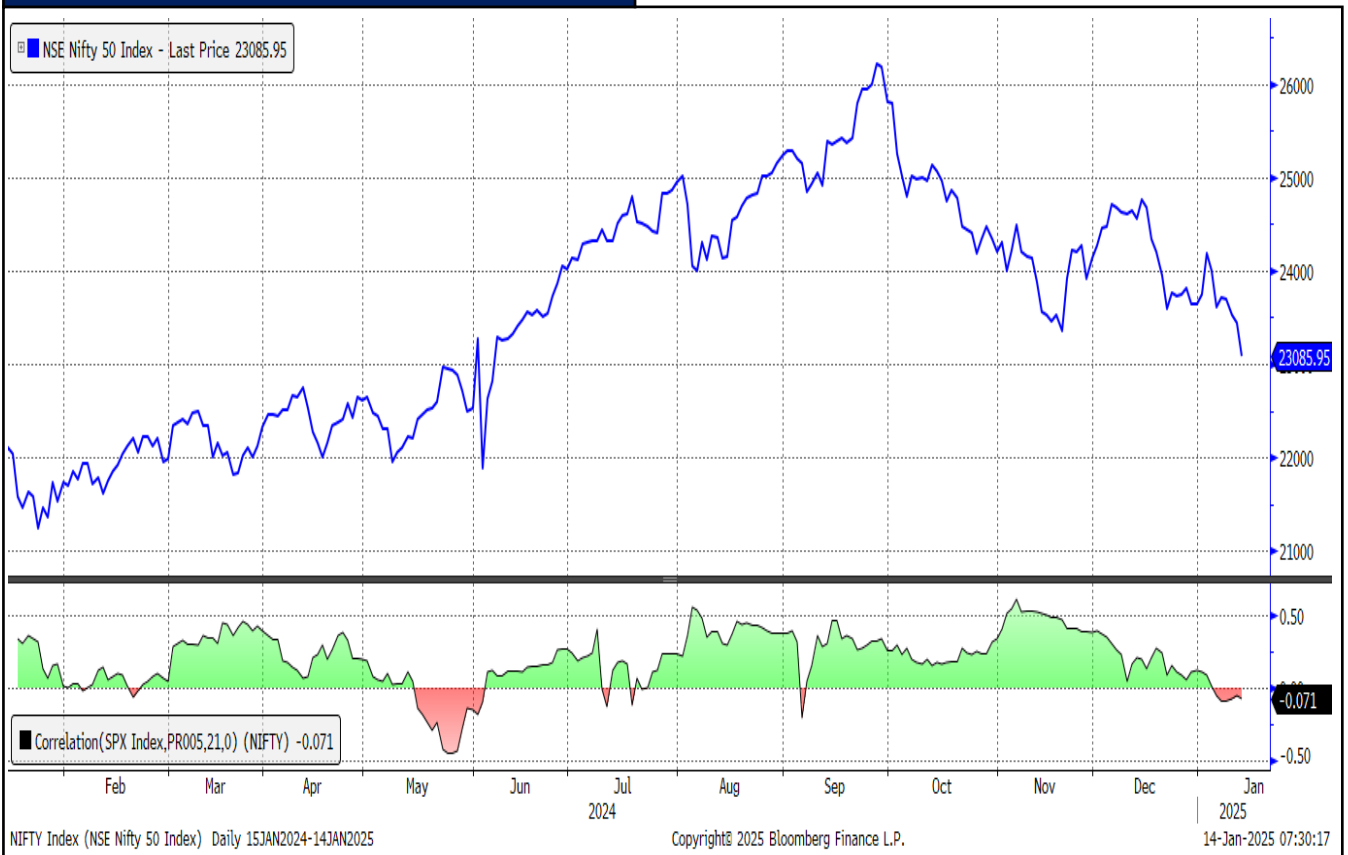
CHART WITH INTERESTING OBSERVATION:

NSE50 Index Correlation with S&P 500 Index

Observation:

The 21-day correlation between the NSE50 index and the S&P 500 index has recently turned negative at -0.071 , indicating a slight inverse relationship between the two indices over the short-term period. This negative correlation suggests that movements in the NSE50 may not be closely aligned with those of the S&P 500, with the potential for diverging trends. Investors might interpret this as a sign of decoupling or a temporary shift in market dynamics between Indian and U.S. equities, which could signal different economic influences or sector-specific drivers at play.

NSE500 Index Daily Chart



Source: Bloomberg, HSL Prime Research



F&O HIGHLIGHTS

GIFT NIFTY SUGGESTS GAP UP OPENING

Create Longs on dips with the SL Of 23000 Levels.

- Nifty fell to the fourth consecutive session on the back of weak global cues by losing 345 points or 1.47%, to close at 23085.
- Short Build-Up was seen in the Nifty Futures where Open Interest rose by 5.39% with Nifty falling by 1.47%.
- Short Build-Up was seen in the Bank Nifty Futures where Open Interest rose by 0.41% with Bank Nifty falling by 1.42%.
- Nifty Open Interest Put Call ratio fell to 0.72 levels from 0.88 levels. PCR is near oversold territory.
- Amongst the Nifty options (16-Jan Expiry), Call writing is seen at 23200-23300 levels, indicating Nifty is likely to find strong resistance in the vicinity of 23200-23300 levels. On the lower side, an immediate support is placed in the vicinity of 22900-23000 levels where we have seen Put writing.
- Short build-up was seen by FII's in the Index Futures segment where they net sold worth 1,419 cr with their Open Interest going up by 20298 contracts.

| Index | Expected Trend | CMP | Buy/Sell | Stop Loss | Target |
|----------------|----------------|-----------------|--------------------|--------------|--------------|
| NIFTY FUT | UP | 23162.1 | BUY @ 23100 | 23000 | 23300 |
| BANK NIFTY FUT | UP | 48266.25 | BUY @ 48200 | 48000 | 48500 |

| Nifty50 Snapshot | | | | Bank Nifty Snapshot | | | |
|---------------------|-----------|-----------|--------|---------------------|-----------|-----------|--------|
| | 13-Jan-25 | 10-Jan-25 | % Chg. | | 13-Jan-25 | 10-Jan-25 | % Chg. |
| Nifty Spot | 23085.95 | 23431.50 | -1.47 | Bank Nifty Spot | 48041.25 | 48734.15 | -1.42 |
| Nifty Futures | 23162.10 | 23500.65 | -1.44 | Bank Nifty Futures | 48266.25 | 48886.40 | -1.27 |
| Premium/ (Discount) | 76.15 | 69.15 | N.A. | Premium/ (Discount) | 225.00 | 152.25 | N.A. |
| Open Interest (OI) | 1.66 | 1.58 | 5.39 | Open Interest (OI) | 0.34 | 0.34 | 0.41 |
| Nifty PCR | 0.72 | 0.88 | -18.57 | Bank Nifty PCR | 0.56 | 0.58 | -4.02 |

| Nifty Options Highest OI (Weekly) | | | |
|-----------------------------------|---------------|--------------|---------------|
| CALL | | PUT | |
| Strike Price | Open Interest | Strike Price | Open Interest |
| 24000 | 10693800 | 23500 | 7012425 |



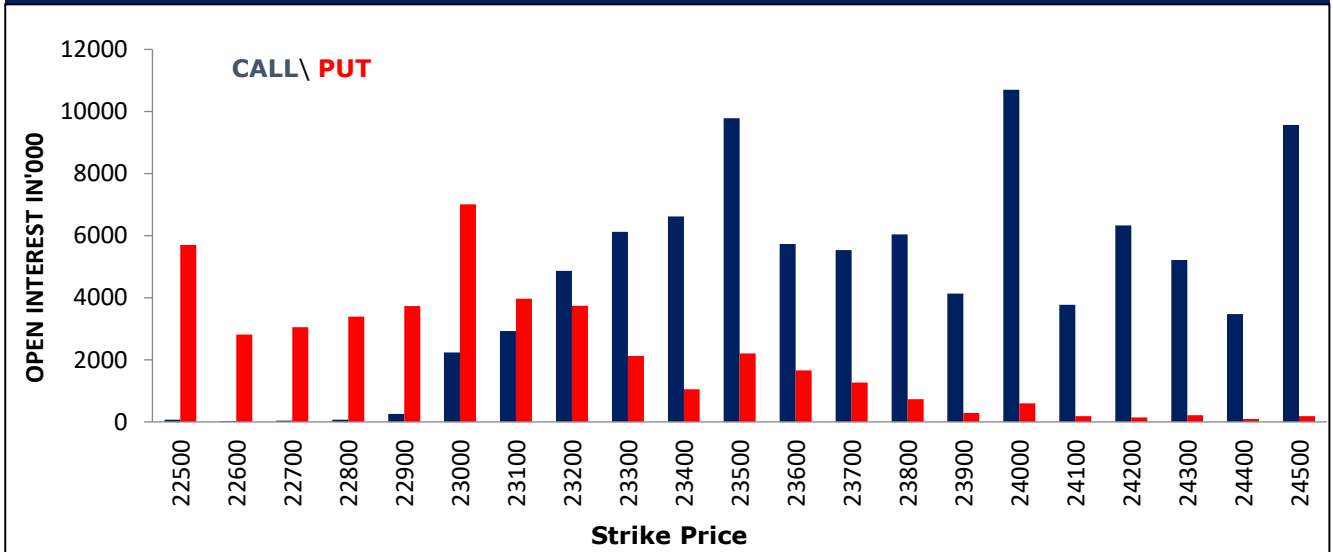
FII Activity On 13 Jan 2025

| | BUY | | SELL | | NET (Rs Cr) | OPEN INTEREST | |
|----------------------|----------------|------------------|----------------|------------------|----------------|----------------|------------------|
| | Contracts | Value (Rs Cr) | Contracts | Value (Rs Cr) | | Contracts | Value (Rs Cr) |
| Index Futures | 83944 | 5426 | 101344 | 6845 | -1419 | 427234 | 28985 |
| Nifty Futures | 57327 | 3486 | 79002 | 5167 | -1681 | 278492 | 18582 |
| Bank Nifty Fut. | 21975 | 1659 | 17116 | 1360 | 299 | 80183 | 6346 |
| Index Options | 7420273 | 985417 | 7174446 | 957369 | 28048 | 5377480 | 550237 |
| Nifty Options | 4965822 | 807588 | 4807323 | 786231 | 21357 | 3216786 | 391514 |
| Bank Nifty Opt. | 1988791 | 149629 | 1908947 | 143431 | 6198 | 1869694 | 141710 |
| Stock Futures | 521664 | 31612 | 480934 | 29365 | 2247 | 5496338 | 333057 |
| Stock Options | 1311498 | 83910 | 1374007 | 87336 | -3426 | 1412171 | 84315 |

FII's Open Interest (Contracts)

| Date | Index Futures | Nifty Futures | Bank nifty Futures | Index Options | Nifty Options | Bank Nifty Options | Stock Futures | Stock Options |
|----------------------|---------------|---------------|--------------------|---------------|---------------|--------------------|---------------|---------------|
| 13-Jan-24 | 427234 | 278492 | 80183 | 5377480 | 3216786 | 1869694 | 5496338 | 1412171 |
| 10-Jan-24 | 406936 | 262745 | 78648 | 4411150 | 2290368 | 1857950 | 5373306 | 1314800 |
| Net Contracts | 20298 | 15747 | 1535 | 966330 | 926418 | 11744 | 123032 | 97371 |

Nifty Weekly (16 - Jan) Option Open Interest Distribution





| Top Gainers OI Wise | | |
|---------------------|---------------|-----------|
| Company | Future OI (%) | Price (%) |
| AARTIIND | 19 | -3 |
| NYKAA | 19 | -3 |
| PAYTM | 19 | -7 |
| ATGL | 17 | -8 |
| ITC | 15 | -1 |

| Top Losers OI Wise | | |
|--------------------|---------------|-----------|
| Company | Future OI (%) | Price (%) |
| AUROPHARMA | -8 | -3 |
| NCC | -8 | -5 |
| HINDCOPPER | -8 | -6 |
| NAVINFLUOR | -7 | 0 |
| LAURUSLABS | -6 | -4 |

| Top Gainers Price Wise | | |
|------------------------|---------------|-----------|
| Company | Future OI (%) | Price (%) |
| ABCAPITAL | 9 | 1 |
| BIOCON | -2 | 1 |
| AXISBANK | 4 | 1 |
| BSE | 0 | 1 |
| TCS | 3 | 1 |

| Top Losers Price Wise | | |
|-----------------------|---------------|-----------|
| Company | Future OI (%) | Price (%) |
| LODHA | 7 | -9 |
| POLICYBZR | 6 | -9 |
| KALYANKJIL | 1 | -9 |
| ATGL | 17 | -8 |
| NAUKRI | -2 | -7 |

| Long Buildup | | |
|--------------|---------------|-----------|
| Company | Future OI (%) | Price (%) |
| ABCAPITAL | 9 | 1 |
| HINDUNILVR | 7 | 0 |
| AXISBANK | 4 | 1 |
| TCS | 3 | 1 |
| INDUSTOWER | 2 | 0 |

| Short Buildup | | |
|---------------|---------------|-----------|
| Company | Future OI (%) | Price (%) |
| AARTIIND | 19 | -3 |
| NYKAA | 19 | -3 |
| PAYTM | 19 | -7 |
| ATGL | 17 | -8 |
| ITC | 15 | -1 |

| Long Unwinding | | |
|----------------|---------------|-----------|
| Company | Future OI (%) | Price (%) |
| AUROPHARMA | -8 | -3 |
| NCC | -8 | -5 |
| HINDCOPPER | -8 | -6 |
| NAVINFLUOR | -7 | 0 |
| LAURUSLABS | -6 | -4 |

| Short Covering | | |
|----------------|---------------|-----------|
| Company | Future OI (%) | Price (%) |
| BSE | 0 | 1 |
| BIOCON | -2 | 1 |

| Securities In Ban For Trade – 14.01.2025 | | | |
|--|--------------|-----|--------------|
| No. | Company Name | No. | Company Name |
| 1. | AARTIIND | 4. | LTF |
| 2. | BANDHANBNK | 5. | MANAPPURAM |
| 3. | HINDCOPPER | 6. | RBLBANK |



Economic Calendar

| Monday | Tuesday | Wednesday | Thursday | Friday |
|--------|---|--|---|--|
| | January 14 | January 15 | January 16 | January 17 |
| | <p>Japan: Trade Balance BoP Basis (Nov)</p> <p>India: Wholesale Prices YoY (Dec)</p> <p>US: NFIB Small Business Optimism (Dec)</p> | <p>Japan: Machine Tool Orders YoY (Dec P)</p> <p>UK: CPI YoY (Dec), Retail Price Index (Dec), House Price Index YoY (Nov)</p> <p>EC: Industrial Production SA MoM (Nov)</p> <p>US: Empire Manufacturing (Jan), CPI YoY (Dec)</p> | <p>Japan: PPI YoY (Dec)</p> <p>UK: Industrial Production YoY (Nov), Construction Output YoY (Nov), Trade Balance GBP/Mn (Nov)</p> <p>EC: Trade Balance SA (Nov)</p> <p>US: Retail Sales Advance MoM (Dec), New York Fed Services Business Activity (Jan), Phil. Fed Business Outlook (Jan), Initial Jobless Claims (Jan 11) Continuing Claims (Jan 4), Business Inventories (Nov), NAHB Housing Index (Jan)</p> | <p>China: New Home Prices MoM (Dec), GDP YoY (4Q), Industrial Production YoY (Dec), Retail Sales YoY (Dec)</p> <p>EC: ECB Current Account SA (Nov), CPI YoY (Dec F)</p> <p>US: Housing Starts (Dec), Building Permits (Dec P), Capacity Utilization (Dec), Industrial Production MoM (Dec), Manufacturing (SIC) Production (Dec)</p> <p>India: FX Reserves (Jan 10)</p> |

Result Calendar

| Monday | Tuesday | Wednesday | Thursday | Friday |
|--------|---|---|---|---|
| | January 14 | January 15 | January 16 | January 17 |
| | <ul style="list-style-type: none"> Atishay Ltd Benares Hotels Ltd. Golkunda Diamonds & Jewellery Ltd. Hathway Cable & Datacom Ltd HDFC Asset Management Company Ltd Network18 Media & Investments Ltd. Shoppers Stop Ltd. Sayaji Hotels (Pune) Ltd Sita Enterprises Ltd. SRM Energy Ltd. Swastik Safe Deposit & Investments Ltd. | <ul style="list-style-type: none"> Aeroflex Industries Ltd Authum Investment & Infrastructure Ltd CEAT Ltd. DB (International) Stock Brokers Ltd. Hdfc Life Insurance Company Ltd Indiabulls Enterprises Ltd Insilco Ltd. Jagsonpal Finance & Leasing Ltd. Kamadgiri Fashion Ltd.-\$ L&t Technology Services Ltd Bank Of Maharashtra Mahindra EPC Irrigation Ltd Maharashtra Scooters Mrp Agro Ltd Nelco Ltd. Oracle Financial Services Software Ltd. Oriental Hotels Ltd. Punjab & Sind Bank Reliance Industrial Infrastructure Ltd. TCL Industries Ltd. Transrail Lighting Ltd Viji Finance Ltd | <ul style="list-style-type: none"> Alok Industries Ltd. Axis Bank Ltd. Bhansali Engineering Polymers Ltd.-\$ D B Corp Ltd Digicontent Ltd G.G.Automotive Gears Ltd. Hatsun Agro Product Ltd. Havells India Ltd. Hawa Engineers Ltd Infosys Ltd. Julien Agro Infratech Ltd Kesoram Industries Ltd. Khaitan Chemicals & Fertilizers Ltd. Ltimindtree Ltd Maresh Developers Ltd Mastek Ltd. Metro Brands Ltd Mudra Financial Services Ltd National Standard (India) Ltd. Plastiblends India Ltd.-\$ Radhika Jeweltech Ltd Reliance Industries Ltd. Sanathnagar Enterprises Limited Sellwin Traders Ltd Shekhawati Industries Ltd Shemaroo Entertainment Ltd Spencers Retail Ltd Sterling And Wilson Renewable Energy Ltd | <ul style="list-style-type: none"> Spaisa Capital Ltd Aether Industries Ltd Amal Ltd. Atlas Cycles (Haryana) Concord Enviro Systems Continental Controls Excel Realty N Infra Ltd Ganesh Housing Corporation Ltd. Icici Lombard General Insurance Company Ltd Indian Hotels Co.Ltd. Jio Financial Services MRO-TEK Realty Ltd Nettlinx Ltd. Next Mediaworks Ltd. Ponni Sugars (Erode) Ltd. Rajoo Engineers Ltd.-\$ Rallis India Ltd. Ramkrishna Forgings Ltd. Roselabs Finance Ltd. Sacheta Metals Ltd. Sbi Life Insurance Company Ltd Seshasayee Paper & Boards Ltd. Sg Finserve Ltd Supreme Petrochem Ltd. Steel Strips Wheels Ltd.-\$ Sterlite Technologies Ltd. Swaraj Engines Ltd. Tech Mahindra Ltd. Ushdev International Ltd. Vinyl Chemicals (India) Ltd. Wipro Ltd. |



OPEN E-MARGIN POSITIONAL CALLS

| NO. | RECO DT. | RECO | COMPANY NAME | ENTRY | CMP | SL | TARGET 1 | TARGET 2 | UPSIDE % | VALID TILL |
|-----|-----------|------|--------------|--------------|--------|--------|----------|----------|----------|------------|
| 1 | 24-DEC-24 | BUY | STAR HEALTH | 486.75-462 | 464.0 | 447.0 | 535.0 | 575.0 | 24 | 24-MAR-25 |
| 2 | 1-JAN-25 | BUY | EIH LTD | 424.9-404 | 399.7 | 393.0 | 460.0 | 485.0 | 21 | 1-MAR-25 |
| 3 | 7-JAN-25 | BUY | PFIZER | 5255.85-5020 | 5090.5 | 4900.0 | 5645.0 | 5940.0 | 17 | 7-MAR-25 |

MUHURAT TRADING MTF PICKS

| NO. | RECO DT. | RECO | COMPANY NAME | ENTRY | CMP | SL | TARGET 1 | TARGET 2 | UPSIDE % | VALID TILL |
|-----|-----------|------|------------------|---------|-------|-------|----------|----------|----------|-------------|
| 1 | 28-OCT-24 | BUY | KARUR VYSYA BANK | 214-218 | 208.6 | 183.0 | 249.0 | 269.0 | 29 | NEXT DIWALI |

*= 1st Target Achieved



NSE 200 SUPPORT & RESISTANCE

| SYMBOL | CLOSE | R2 | R1 | PIVOT | S1 | S2 | 5 DMA | 20 DMA | % Delivery | Trend |
|------------|---------|---------|---------|---------|---------|---------|---------|---------|------------|---------|
| ABB | 6109.3 | 6495.0 | 6302.1 | 6191.1 | 5998.2 | 5887.2 | 6474.1 | 6924.7 | 50.5 | Bearish |
| ABCAPITAL | 169.8 | 176.0 | 172.9 | 170.7 | 167.6 | 165.4 | 173.9 | 182.4 | 31.5 | Bearish |
| ABFRL | 260.4 | 278.6 | 269.5 | 264.2 | 255.1 | 249.8 | 269.8 | 280.4 | 32.7 | Bearish |
| ACC | 1859.5 | 1960.8 | 1910.1 | 1874.4 | 1823.7 | 1788.0 | 1958.2 | 2058.3 | 53.3 | Bearish |
| AMBUJACEM | 493.2 | 522.3 | 507.7 | 499.5 | 484.9 | 476.7 | 520.7 | 543.3 | 53.1 | Bearish |
| ADANIPOWER | 449.9 | 490.6 | 470.2 | 457.6 | 437.3 | 424.7 | 489.0 | 508.8 | 36.4 | Bearish |
| ADANIGREEN | 889.8 | 957.0 | 923.4 | 904.2 | 870.6 | 851.4 | 961.0 | 1037.2 | 32.0 | Bearish |
| ADANITRANS | 688.8 | 740.6 | 714.7 | 698.6 | 672.6 | 656.5 | 744.3 | 784.2 | 28.2 | Bearish |
| ADANIENT | 2225.2 | 2417.1 | 2321.1 | 2269.0 | 2173.0 | 2120.9 | 2422.7 | 2458.5 | 29.4 | Bearish |
| ADANIPORTS | 1066.7 | 1124.9 | 1095.8 | 1077.4 | 1048.3 | 1029.9 | 1127.5 | 1190.8 | 40.1 | Bearish |
| ASHOKLEY | 202.5 | 211.5 | 207.0 | 204.4 | 199.9 | 197.3 | 214.9 | 222.1 | 52.5 | Bearish |
| ALKEM | 5227.4 | 5548.0 | 5387.7 | 5300.7 | 5140.4 | 5053.5 | 5436.4 | 5479.7 | 45.5 | Bearish |
| APOLLOHOSP | 6839.6 | 7109.2 | 6974.4 | 6865.2 | 6730.4 | 6621.3 | 7109.5 | 7247.7 | 53.8 | Bearish |
| ASIANPAINT | 2252.7 | 2322.5 | 2287.6 | 2267.0 | 2232.1 | 2211.5 | 2310.1 | 2307.3 | 54.1 | Bearish |
| APOLLOTYRE | 443.2 | 467.7 | 455.4 | 448.2 | 435.9 | 428.7 | 472.4 | 515.5 | 34.1 | Bearish |
| AUROPHARMA | 1161.4 | 1207.7 | 1184.6 | 1168.5 | 1145.4 | 1129.3 | 1237.7 | 1270.0 | 65.9 | Bearish |
| ASTRAL | 1471.5 | 1579.1 | 1525.3 | 1496.2 | 1442.4 | 1413.4 | 1543.8 | 1662.5 | 49.2 | Bearish |
| ATGL | 628.2 | 695.7 | 661.9 | 641.3 | 607.5 | 586.9 | 680.0 | 701.0 | 26.2 | Bearish |
| AUBANK | 560.3 | 579.6 | 570.0 | 562.3 | 552.7 | 545.0 | 568.0 | 562.1 | 65.5 | Bearish |
| AWL | 262.0 | 278.5 | 270.3 | 266.1 | 257.9 | 253.7 | 306.4 | 313.1 | 45.7 | Bearish |
| AXISBANK | 1049.3 | 1084.9 | 1067.1 | 1045.2 | 1027.4 | 1005.4 | 1058.8 | 1081.9 | 56.6 | Bearish |
| BAJFINANCE | 7151.0 | 7301.1 | 7226.0 | 7180.0 | 7104.9 | 7058.9 | 7285.2 | 7091.0 | 52.1 | Bullish |
| BANDHANBNK | 137.7 | 145.9 | 141.8 | 139.4 | 135.3 | 132.9 | 147.4 | 157.9 | 39.6 | Bearish |
| BATAINDIA | 1364.1 | 1442.0 | 1403.0 | 1381.0 | 1342.0 | 1320.0 | 1409.6 | 1394.1 | 31.8 | Bearish |
| BHARTIARTL | 1597.2 | 1633.3 | 1615.2 | 1596.7 | 1578.6 | 1560.1 | 1602.0 | 1600.3 | 63.0 | Bearish |
| BEL | 259.6 | 272.9 | 266.2 | 262.3 | 255.6 | 251.7 | 276.2 | 290.9 | 52.0 | Bearish |
| BHEL | 192.6 | 204.4 | 198.5 | 195.1 | 189.2 | 185.7 | 211.9 | 229.8 | 43.7 | Bearish |
| BHARATFORG | 1169.9 | 1226.7 | 1198.3 | 1182.9 | 1154.5 | 1139.2 | 1225.1 | 1287.0 | 67.0 | Bearish |
| BALKRISIND | 2595.8 | 2768.2 | 2682.0 | 2633.5 | 2547.3 | 2498.8 | 2724.0 | 2805.8 | 31.7 | Bearish |
| BIOCON | 365.2 | 384.8 | 375.0 | 367.7 | 357.9 | 350.7 | 370.1 | 358.2 | 21.1 | Bullish |
| BAJAJ-AUTO | 8596.3 | 8831.3 | 8713.8 | 8632.4 | 8514.9 | 8433.5 | 8729.7 | 8840.5 | 52.0 | Bearish |
| BAJAJFINSV | 1674.2 | 1713.7 | 1693.9 | 1680.3 | 1660.5 | 1646.9 | 1689.1 | 1631.3 | 60.3 | Bullish |
| BAJAJHLDNG | 10314.8 | 11070.4 | 10692.6 | 10468.9 | 10091.1 | 9867.3 | 10936.7 | 11291.0 | 37.5 | Bearish |
| BANKBARODA | 217.7 | 227.6 | 222.6 | 219.5 | 214.6 | 211.4 | 227.9 | 240.5 | 51.7 | Bearish |
| BANKINDIA | 90.4 | 95.9 | 93.1 | 91.6 | 88.8 | 87.3 | 96.7 | 102.5 | 47.7 | Bearish |
| ABBOTINDIA | 28555.8 | 28898.9 | 28727.3 | 28484.7 | 28313.2 | 28070.6 | 29330.1 | 29130.6 | 40.8 | Bearish |
| BOSCHLTD | 30979.8 | 32045.7 | 31512.7 | 31164.2 | 30631.3 | 30282.8 | 32299.5 | 34047.1 | 48.1 | Bearish |
| BPCL | 265.3 | 278.5 | 271.9 | 268.1 | 261.5 | 257.6 | 278.5 | 289.2 | 50.4 | Bearish |
| BERGEPAIN | 451.4 | 466.6 | 459.0 | 454.0 | 446.4 | 441.4 | 458.8 | 453.3 | 32.2 | Bearish |
| BRITANNIA | 4927.1 | 5035.6 | 4981.3 | 4943.7 | 4889.4 | 4851.8 | 4896.9 | 4806.2 | 50.7 | Bullish |
| CANBK | 88.5 | 94.1 | 91.3 | 89.6 | 86.8 | 85.0 | 94.4 | 99.7 | 47.8 | Bearish |
| CONCOR | 728.4 | 759.8 | 744.1 | 734.6 | 718.9 | 709.3 | 749.6 | 776.3 | 59.5 | Bearish |
| CGPOWER | 615.1 | 657.7 | 636.4 | 622.3 | 601.0 | 586.9 | 671.2 | 724.8 | 63.6 | Bearish |
| CHOLAFIN | 1222.6 | 1276.6 | 1249.6 | 1232.4 | 1205.4 | 1188.3 | 1263.4 | 1235.2 | 65.1 | Bearish |
| CIPLA | 1439.2 | 1474.1 | 1456.7 | 1446.5 | 1429.1 | 1418.9 | 1477.7 | 1490.4 | 58.4 | Bearish |
| COLPAL | 2752.1 | 2868.0 | 2810.0 | 2777.6 | 2719.6 | 2687.2 | 2801.7 | 2766.3 | 50.3 | Bearish |
| COALINDIA | 362.9 | 374.0 | 368.5 | 364.9 | 359.3 | 355.7 | 372.8 | 384.8 | 50.6 | Bearish |
| COFORGE | 8705.6 | 9554.6 | 9130.1 | 8899.0 | 8474.5 | 8243.5 | 9314.2 | 9480.5 | 59.0 | Bearish |
| COROMANDEL | 1808.0 | 1947.4 | 1877.7 | 1834.0 | 1764.3 | 1720.6 | 1913.7 | 1883.0 | 43.8 | Bearish |
| CROMPTON | 353.5 | 361.2 | 357.4 | 352.8 | 349.0 | 344.4 | 364.3 | 382.8 | 54.9 | Bearish |



NSE 200 SUPPORT & RESISTANCE

| SYMBOL | CLOSE | R2 | R1 | PIVOT | S1 | S2 | 5 DMA | 20 DMA | % Delivery | Trend |
|------------|---------|---------|---------|---------|---------|---------|---------|---------|------------|---------|
| DABUR | 510.8 | 523.3 | 517.0 | 513.3 | 507.0 | 503.2 | 514.5 | 509.9 | 52.2 | Bullish |
| DALBHARAT | 1702.1 | 1794.8 | 1748.5 | 1711.0 | 1664.6 | 1627.1 | 1766.3 | 1794.5 | 44.9 | Bearish |
| DELHIVERY | 321.2 | 340.4 | 330.8 | 324.4 | 314.8 | 308.5 | 332.7 | 350.3 | 54.8 | Bearish |
| DEVYANI | 177.6 | 187.4 | 182.5 | 179.1 | 174.3 | 170.9 | 186.4 | 182.0 | 26.7 | Bearish |
| DIVISLAB | 5732.5 | 5991.3 | 5861.9 | 5758.1 | 5628.7 | 5525.0 | 5821.0 | 5901.3 | 56.3 | Bearish |
| DIXON | 15835.2 | 16851.1 | 16343.1 | 16042.1 | 15534.1 | 15233.1 | 16951.0 | 17925.1 | 44.9 | Bearish |
| DLF | 710.8 | 762.8 | 736.8 | 721.9 | 695.9 | 681.0 | 771.4 | 824.4 | 57.2 | Bearish |
| LALPATHLAB | 2863.8 | 2937.3 | 2900.5 | 2875.3 | 2838.5 | 2813.3 | 2978.3 | 2981.6 | 42.3 | Bearish |
| DMART | 3507.5 | 3714.5 | 3611.0 | 3540.5 | 3437.0 | 3366.5 | 3736.2 | 3627.6 | 44.1 | Bearish |
| DEEPAKNTN | 2327.9 | 2430.5 | 2379.2 | 2349.1 | 2297.8 | 2267.7 | 2420.3 | 2528.4 | 38.0 | Bearish |
| DRREDDY | 1335.1 | 1363.8 | 1349.4 | 1339.8 | 1325.5 | 1315.9 | 1356.7 | 1344.7 | 63.0 | Bearish |
| EICHERMOT | 4939.1 | 5061.6 | 5000.3 | 4963.0 | 4901.7 | 4864.4 | 5095.6 | 4948.5 | 53.7 | Bearish |
| ESCORTS | 3298.1 | 3448.3 | 3373.2 | 3322.8 | 3247.7 | 3197.2 | 3354.4 | 3301.1 | 38.5 | Bearish |
| FEDERALBNK | 187.7 | 190.1 | 188.9 | 187.3 | 186.1 | 184.5 | 192.6 | 199.0 | 48.0 | Bearish |
| FLUOROCHEM | 3730.0 | 3925.4 | 3827.7 | 3675.3 | 3577.6 | 3425.2 | 3860.3 | 4163.1 | 37.2 | Bearish |
| FORTIS | 662.8 | 697.8 | 680.3 | 669.4 | 651.9 | 641.0 | 704.5 | 699.2 | 55.2 | Bearish |
| GAIL | 172.2 | 181.3 | 176.7 | 174.2 | 169.6 | 167.1 | 182.3 | 190.7 | 57.6 | Bearish |
| GODREJCP | 1159.0 | 1188.8 | 1173.9 | 1165.1 | 1150.2 | 1141.3 | 1164.9 | 1106.5 | 65.4 | Bullish |
| GLAND | 1695.3 | 1834.8 | 1765.1 | 1705.2 | 1635.5 | 1575.6 | 1801.4 | 1799.3 | 43.5 | Bearish |
| GODREJPROP | 2248.9 | 2420.9 | 2334.9 | 2287.5 | 2201.5 | 2154.0 | 2469.5 | 2757.2 | 51.0 | Bearish |
| GRASIM | 2288.2 | 2375.7 | 2331.9 | 2304.4 | 2260.7 | 2233.2 | 2393.1 | 2485.3 | 53.6 | Bearish |
| GUJGASLTD | 471.1 | 496.1 | 483.6 | 474.8 | 462.3 | 453.5 | 492.9 | 502.5 | 60.0 | Bearish |
| HAVELLS | 1532.1 | 1615.1 | 1573.6 | 1547.4 | 1505.9 | 1479.7 | 1608.5 | 1665.3 | 59.1 | Bearish |
| HCLTECH | 1989.4 | 2035.8 | 2012.6 | 1989.0 | 1965.8 | 1942.2 | 1953.5 | 1935.1 | 65.5 | Bullish |
| HDFCAMC | 3834.6 | 3956.7 | 3895.6 | 3843.9 | 3782.9 | 3731.2 | 3952.8 | 4197.9 | 44.8 | Bearish |
| HDFCBANK | 1630.9 | 1656.4 | 1643.6 | 1634.0 | 1621.2 | 1611.5 | 1672.6 | 1760.6 | 68.6 | Bearish |
| HDFCLIFE | 599.8 | 613.0 | 606.4 | 601.8 | 595.2 | 590.7 | 611.7 | 619.3 | 61.1 | Bearish |
| HEROMOTOCO | 4043.7 | 4178.8 | 4111.2 | 4054.4 | 3986.8 | 3929.9 | 4121.5 | 4251.6 | 56.9 | Bearish |
| HAL | 3788.3 | 4061.5 | 3924.9 | 3848.6 | 3712.0 | 3635.7 | 4031.9 | 4219.7 | 45.8 | Bearish |
| HINDALCO | 563.8 | 578.5 | 571.1 | 566.6 | 559.2 | 554.6 | 579.7 | 607.3 | 63.7 | Bearish |
| HINDPETRO | 364.4 | 383.4 | 373.9 | 367.0 | 357.5 | 350.6 | 383.0 | 401.1 | 46.3 | Bearish |
| HINDUNILVR | 2451.0 | 2491.6 | 2471.3 | 2440.2 | 2419.9 | 2388.7 | 2424.1 | 2369.8 | 73.1 | Bullish |
| HONAUT | 40125.0 | 42233.1 | 41179.1 | 40506.9 | 39452.8 | 38780.6 | 41642.5 | 41470.8 | 81.7 | Bearish |
| HINDZINC | 419.4 | 440.5 | 429.9 | 422.3 | 411.8 | 404.2 | 436.6 | 456.5 | 55.3 | Bearish |
| ICICIBANK | 1229.8 | 1251.9 | 1240.8 | 1232.9 | 1221.8 | 1213.8 | 1257.0 | 1286.6 | 73.2 | Bearish |
| ICICIGI | 1837.0 | 1917.6 | 1877.3 | 1847.6 | 1807.3 | 1777.7 | 1869.1 | 1860.7 | 60.3 | Bearish |
| IDEA | 7.7 | 8.3 | 8.0 | 7.8 | 7.5 | 7.3 | 7.9 | 7.8 | 27.3 | Bearish |
| IDFCFIRSTB | 59.3 | 61.3 | 60.3 | 59.7 | 58.7 | 58.1 | 61.4 | 62.9 | 46.7 | Bearish |
| IGL | 406.2 | 419.3 | 412.7 | 406.4 | 399.8 | 393.4 | 415.3 | 406.1 | 35.9 | Bullish |
| INDHOTEL | 756.1 | 818.1 | 787.1 | 770.9 | 739.9 | 723.6 | 814.4 | 856.2 | 65.2 | Bearish |
| INDUSINDBK | 941.7 | 988.9 | 965.3 | 949.9 | 926.3 | 910.9 | 965.0 | 963.9 | 39.2 | Bearish |
| INDIANB | 475.8 | 498.7 | 487.2 | 480.6 | 469.1 | 462.5 | 497.5 | 529.4 | 50.0 | Bearish |
| INDIGO | 4001.4 | 4205.7 | 4103.6 | 4027.8 | 3925.6 | 3849.8 | 4216.3 | 4428.6 | 62.9 | Bearish |
| INDUSTOWER | 320.5 | 340.8 | 330.7 | 323.1 | 313.0 | 305.4 | 326.0 | 336.5 | 46.2 | Bearish |
| INFY | 1962.2 | 1998.5 | 1980.3 | 1964.7 | 1946.5 | 1930.9 | 1942.1 | 1933.8 | 63.6 | Bullish |
| NAUKRI | 7253.2 | 7950.1 | 7601.6 | 7406.2 | 7057.7 | 6862.3 | 7942.8 | 8544.3 | 52.8 | Bearish |
| IOC | 122.0 | 131.1 | 126.5 | 123.8 | 119.3 | 116.6 | 130.7 | 135.9 | 45.5 | Bearish |
| IPCALAB | 1579.7 | 1657.7 | 1618.7 | 1595.7 | 1556.7 | 1533.8 | 1660.8 | 1638.1 | 38.4 | Bearish |
| ICICIPRULI | 636.5 | 660.8 | 648.6 | 640.8 | 628.6 | 620.8 | 648.7 | 658.2 | 40.4 | Bearish |
| IRCTC | 746.9 | 792.0 | 769.4 | 756.6 | 734.0 | 721.2 | 767.0 | 787.6 | 38.8 | Bearish |



NSE 200 SUPPORT & RESISTANCE

| SYMBOL | CLOSE | R2 | R1 | PIVOT | S1 | S2 | 5 DMA | 20 DMA | % Delivery | Trend |
|-------------|----------|----------|----------|----------|----------|----------|----------|----------|------------|---------|
| IRFC | 128.4 | 138.7 | 133.6 | 130.6 | 125.5 | 122.6 | 138.9 | 147.9 | 33.3 | Bearish |
| ITC | 439.1 | 448.4 | 443.7 | 439.4 | 434.7 | 430.4 | 444.9 | 448.6 | 71.9 | Bearish |
| JINDALSTEL | 876.7 | 936.3 | 906.5 | 888.8 | 859.0 | 841.3 | 922.0 | 933.7 | 52.2 | Bearish |
| JSWSTEEL | 883.8 | 906.2 | 895.0 | 887.5 | 876.3 | 868.8 | 897.8 | 917.9 | 51.1 | Bearish |
| JSWENERGY | 517.8 | 548.9 | 533.3 | 524.0 | 508.4 | 499.1 | 558.0 | 628.9 | 34.2 | Bearish |
| JUBLFOOD | 706.6 | 744.1 | 725.4 | 714.8 | 696.0 | 685.4 | 739.8 | 718.1 | 47.2 | Bearish |
| CUMMINSIND | 2873.4 | 3040.2 | 2956.8 | 2905.2 | 2821.8 | 2770.3 | 3061.9 | 3274.9 | 56.2 | Bearish |
| KOTAKBANK | 1738.4 | 1756.4 | 1747.4 | 1735.6 | 1726.6 | 1714.8 | 1765.1 | 1773.9 | 71.4 | Bearish |
| LAURUSLABS | 559.1 | 597.1 | 578.1 | 567.0 | 548.0 | 536.9 | 595.9 | 587.2 | 40.4 | Bearish |
| LICHSGFIN | 533.6 | 563.9 | 548.7 | 539.9 | 524.7 | 515.9 | 566.0 | 589.3 | 42.2 | Bearish |
| LICI | 809.0 | 847.1 | 828.0 | 817.8 | 798.7 | 788.4 | 847.4 | 887.4 | 40.0 | Bearish |
| LUPIN | 2154.5 | 2216.3 | 2185.4 | 2162.0 | 2131.1 | 2107.7 | 2241.6 | 2231.4 | 53.4 | Bearish |
| LT | 3464.3 | 3568.4 | 3516.3 | 3482.5 | 3430.4 | 3396.6 | 3553.6 | 3645.3 | 67.5 | Bearish |
| LTF | 130.9 | 139.8 | 135.4 | 132.3 | 127.8 | 124.7 | 139.1 | 139.4 | 45.8 | Bearish |
| LTIM | 6030.8 | 6217.5 | 6124.1 | 6064.6 | 5971.2 | 5911.6 | 5926.9 | 5934.8 | 55.5 | Bearish |
| LTTTS | 4853.1 | 5032.4 | 4942.8 | 4880.2 | 4790.5 | 4727.9 | 4890.3 | 4876.1 | 41.2 | Bearish |
| MANKIND | 2596.0 | 2794.1 | 2695.0 | 2622.6 | 2523.5 | 2451.0 | 2792.6 | 2842.9 | 57.6 | Bearish |
| MFSL | 1068.9 | 1085.1 | 1077.0 | 1064.1 | 1056.0 | 1043.0 | 1087.4 | 1110.0 | 67.9 | Bearish |
| MAXHEALTH | 1082.5 | 1151.3 | 1116.9 | 1093.1 | 1058.7 | 1034.9 | 1168.5 | 1162.9 | 60.7 | Bearish |
| M&M | 2999.7 | 3093.4 | 3046.5 | 3020.0 | 2973.1 | 2946.6 | 3082.8 | 3048.7 | 62.7 | Bearish |
| M&MFIN | 263.2 | 277.5 | 270.3 | 266.2 | 259.0 | 254.9 | 274.9 | 270.4 | 25.2 | Bearish |
| MOTHERSON | 139.8 | 146.6 | 143.2 | 140.6 | 137.2 | 134.7 | 147.6 | 155.6 | 56.6 | Bearish |
| MPHASIS | 2777.5 | 2944.3 | 2860.9 | 2814.5 | 2731.1 | 2684.6 | 2883.1 | 2952.1 | 49.6 | Bearish |
| MARICO | 668.4 | 680.9 | 674.7 | 669.0 | 662.8 | 657.1 | 658.2 | 645.1 | 66.0 | Bullish |
| MRF | 113003.8 | 118534.6 | 115769.2 | 114234.6 | 111469.2 | 109934.6 | 118017.1 | 126747.4 | 34.5 | Bearish |
| MARUTI | 11497.7 | 11726.5 | 11612.1 | 11540.1 | 11425.7 | 11353.6 | 11682.5 | 11272.5 | 55.2 | Bullish |
| MSUMI | 55.2 | 57.1 | 56.2 | 55.2 | 54.2 | 53.2 | 56.8 | 59.0 | 62.9 | Bearish |
| MUTHOOT FIN | 2096.5 | 2156.0 | 2126.3 | 2106.8 | 2077.0 | 2057.5 | 2151.3 | 2133.8 | 66.1 | Bearish |
| NESTLEIND | 2237.4 | 2279.6 | 2258.5 | 2240.0 | 2218.9 | 2200.4 | 2234.8 | 2193.9 | 59.1 | Bullish |
| NAVINFUOR | 3617.9 | 3717.4 | 3667.6 | 3624.1 | 3574.4 | 3530.9 | 3609.0 | 3413.4 | 60.1 | Bullish |
| NHPC | 72.6 | 76.5 | 74.5 | 73.3 | 71.4 | 70.2 | 77.1 | 80.9 | 46.1 | Bearish |
| NMDC | 60.0 | 63.6 | 61.8 | 60.8 | 58.9 | 57.9 | 64.0 | 68.4 | 46.7 | Bearish |
| NTPC | 298.2 | 314.8 | 306.5 | 301.7 | 293.4 | 288.6 | 316.2 | 331.9 | 69.6 | Bearish |
| NYKAA | 164.5 | 171.1 | 167.8 | 164.7 | 161.5 | 158.4 | 169.3 | 167.3 | 34.6 | Bearish |
| OBEROIRLTY | 2013.4 | 2169.8 | 2091.6 | 2045.8 | 1967.6 | 1921.9 | 2187.8 | 2257.5 | 34.6 | Bearish |
| OFSS | 10846.9 | 11625.6 | 11236.2 | 11010.6 | 10621.3 | 10395.7 | 11630.4 | 12276.0 | 30.7 | Bearish |
| OIL | 452.4 | 489.8 | 471.1 | 460.0 | 441.3 | 430.2 | 468.3 | 447.2 | 19.6 | Bullish |
| ONGC | 255.7 | 273.6 | 264.7 | 259.6 | 250.7 | 245.7 | 263.4 | 248.2 | 26.5 | Bullish |
| PAGEIND | 45911.6 | 47223.4 | 46567.5 | 46073.4 | 45417.5 | 44923.4 | 47415.8 | 48027.5 | 53.3 | Bearish |
| PATANJALI | 1776.4 | 1824.5 | 1800.5 | 1775.9 | 1751.9 | 1727.3 | 1834.2 | 1800.9 | 47.4 | Bearish |
| PAYTM | 789.7 | 848.7 | 819.2 | 802.2 | 772.7 | 755.6 | 883.5 | 965.8 | 22.2 | Bearish |
| PRESTIGE | 1426.7 | 1496.8 | 1461.7 | 1434.9 | 1399.8 | 1373.0 | 1518.5 | 1688.6 | 60.1 | Bearish |
| PGHH | 14706.7 | 14828.9 | 14767.8 | 14683.9 | 14622.8 | 14538.9 | 14681.1 | 14904.2 | 60.6 | Bearish |
| PIIND | 3400.3 | 3683.4 | 3541.9 | 3468.4 | 3326.9 | 3253.4 | 3579.6 | 3724.9 | 52.1 | Bearish |
| PIDILITIND | 2796.7 | 2910.2 | 2853.5 | 2822.2 | 2765.5 | 2734.2 | 2898.4 | 2949.6 | 61.5 | Bearish |
| PEL | 947.9 | 1005.8 | 976.8 | 958.9 | 930.0 | 912.1 | 1015.2 | 1093.4 | 35.6 | Bearish |
| PETRONET | 314.9 | 321.6 | 318.2 | 315.7 | 312.4 | 309.9 | 324.7 | 334.9 | 58.5 | Bearish |
| PNB | 95.4 | 100.0 | 97.7 | 96.2 | 93.9 | 92.3 | 100.2 | 102.5 | 38.1 | Bearish |
| POLICYBZR | 1697.2 | 1849.6 | 1773.4 | 1726.8 | 1650.6 | 1604.0 | 1912.4 | 2066.4 | 50.9 | Bearish |
| POLYCAB | 6251.8 | 6648.2 | 6450.0 | 6339.1 | 6140.9 | 6029.9 | 6721.5 | 7133.3 | 46.8 | Bearish |



NSE 200 SUPPORT & RESISTANCE

| SYMBOL | CLOSE | R2 | R1 | PIVOT | S1 | S2 | 5 DMA | 20 DMA | % Delivery | Trend |
|------------|---------|---------|---------|---------|---------|---------|---------|---------|------------|---------|
| POONAWALLA | 302.3 | 312.6 | 307.4 | 303.8 | 298.6 | 295.0 | 312.5 | 320.0 | 49.8 | Bearish |
| PFC | 389.3 | 416.2 | 402.8 | 394.9 | 381.4 | 373.5 | 419.3 | 452.7 | 38.3 | Bearish |
| PERSISTENT | 6003.4 | 6419.9 | 6211.7 | 6098.4 | 5890.1 | 5776.8 | 6213.4 | 6399.5 | 59.9 | Bearish |
| POWERGRID | 287.6 | 302.8 | 295.2 | 291.0 | 283.4 | 279.2 | 300.9 | 311.9 | 65.5 | Bearish |
| RECLTD | 446.8 | 477.7 | 462.2 | 452.9 | 437.5 | 428.2 | 483.3 | 511.2 | 33.9 | Bearish |
| RELIANCE | 1239.9 | 1256.0 | 1247.9 | 1237.2 | 1229.1 | 1218.3 | 1248.6 | 1234.3 | 70.1 | Bullish |
| SAIL | 100.1 | 107.6 | 103.8 | 101.8 | 98.0 | 95.9 | 107.1 | 114.2 | 40.4 | Bearish |
| SBICARD | 713.6 | 722.4 | 718.0 | 711.8 | 707.3 | 701.1 | 727.4 | 704.6 | 50.0 | Bullish |
| SBILIFE | 1467.4 | 1496.4 | 1481.9 | 1463.8 | 1449.3 | 1431.1 | 1471.0 | 1424.8 | 60.8 | Bullish |
| SBIN | 729.5 | 753.4 | 741.5 | 732.0 | 720.0 | 710.5 | 756.6 | 798.5 | 40.2 | Bearish |
| SHRIRAMFIN | 521.1 | 548.8 | 535.0 | 526.9 | 513.0 | 504.9 | 557.3 | 582.0 | 54.5 | Bearish |
| SIEMENS | 5803.3 | 6187.0 | 5995.2 | 5887.6 | 5695.7 | 5588.1 | 6185.4 | 6748.4 | 53.0 | Bearish |
| SONACOMS | 561.9 | 578.7 | 570.3 | 563.3 | 554.9 | 547.8 | 571.0 | 592.3 | 69.6 | Bearish |
| SHRECEM | 24874.5 | 25746.2 | 25310.3 | 25064.1 | 24628.2 | 24382.0 | 25721.2 | 26481.1 | 56.1 | Bearish |
| SRF | 2516.0 | 2631.3 | 2573.7 | 2539.9 | 2482.2 | 2448.4 | 2490.1 | 2322.6 | 30.3 | Bullish |
| SUNPHARMA | 1746.9 | 1801.4 | 1774.2 | 1758.3 | 1731.1 | 1715.2 | 1809.8 | 1832.6 | 66.2 | Bearish |
| SUNTV | 645.0 | 680.8 | 662.9 | 649.6 | 631.7 | 618.5 | 663.9 | 689.8 | 43.2 | Bearish |
| SYNGENE | 822.8 | 873.5 | 848.1 | 830.8 | 805.4 | 788.0 | 861.7 | 857.9 | 59.2 | Bearish |
| TATASTEEL | 122.9 | 127.9 | 125.4 | 124.0 | 121.5 | 120.1 | 129.3 | 137.5 | 45.9 | Bearish |
| TATACONSUM | 965.5 | 983.9 | 974.7 | 959.8 | 950.6 | 935.8 | 965.0 | 926.5 | 62.0 | Bullish |
| TATACOMM | 1632.3 | 1737.0 | 1684.6 | 1654.6 | 1602.2 | 1572.2 | 1689.8 | 1728.5 | 41.9 | Bearish |
| TCS | 4291.1 | 4376.0 | 4333.6 | 4280.5 | 4238.0 | 4184.9 | 4146.5 | 4183.7 | 55.1 | Bearish |
| TECHM | 1659.7 | 1721.3 | 1690.5 | 1670.2 | 1639.4 | 1619.1 | 1668.6 | 1709.5 | 57.8 | Bearish |
| TATAELXSI | 5941.6 | 6152.5 | 6047.0 | 5983.5 | 5878.1 | 5814.6 | 6279.6 | 6763.1 | 29.0 | Bearish |
| TIINDIA | 3230.9 | 3528.4 | 3379.7 | 3299.6 | 3150.8 | 3070.7 | 3449.9 | 3588.1 | 43.6 | Bearish |
| TORNTPOWER | 1309.8 | 1390.6 | 1350.2 | 1325.6 | 1285.2 | 1260.6 | 1394.2 | 1492.2 | 49.6 | Bearish |
| TATAPOWER | 340.0 | 360.9 | 350.4 | 344.4 | 334.0 | 328.0 | 363.3 | 392.0 | 44.3 | Bearish |
| RAMCOCEM | 881.8 | 925.1 | 903.4 | 890.0 | 868.3 | 854.9 | 926.6 | 975.3 | 46.0 | Bearish |
| TRENT | 6224.4 | 6669.9 | 6447.2 | 6301.1 | 6078.3 | 5932.2 | 6600.7 | 6944.5 | 45.3 | Bearish |
| TRIDENT | 29.7 | 31.9 | 30.8 | 30.2 | 29.1 | 28.4 | 31.8 | 33.5 | 39.1 | Bearish |
| TORNTPHARM | 3235.4 | 3317.7 | 3276.5 | 3253.0 | 3211.8 | 3188.2 | 3312.0 | 3379.4 | 60.6 | Bearish |
| TITAN | 3382.8 | 3515.3 | 3449.0 | 3400.8 | 3334.5 | 3286.3 | 3459.8 | 3385.8 | 55.3 | Bearish |
| TATACHEM | 949.6 | 981.6 | 965.6 | 956.3 | 940.3 | 931.1 | 991.6 | 1032.0 | 51.1 | Bearish |
| TTML | 66.1 | 72.0 | 69.0 | 67.3 | 64.3 | 62.6 | 71.6 | 76.4 | 28.4 | Bearish |
| TATAMOTORS | 751.0 | 782.5 | 766.8 | 757.8 | 742.0 | 733.0 | 778.8 | 759.3 | 35.0 | Bearish |
| TVSMOTOR | 2176.6 | 2315.6 | 2246.1 | 2208.8 | 2139.3 | 2101.9 | 2306.5 | 2402.3 | 58.2 | Bearish |
| UBL | 1944.5 | 2049.1 | 1996.8 | 1966.1 | 1913.8 | 1883.1 | 2014.7 | 2037.6 | 45.5 | Bearish |
| UNIONBANK | 101.3 | 106.0 | 103.6 | 102.2 | 99.8 | 98.4 | 107.4 | 117.4 | 46.9 | Bearish |
| UNITDSPR | 1483.6 | 1558.1 | 1520.8 | 1499.7 | 1462.4 | 1441.3 | 1559.9 | 1587.6 | 71.0 | Bearish |
| UPL | 533.7 | 555.9 | 544.8 | 537.9 | 526.7 | 519.8 | 542.4 | 521.5 | 46.9 | Bullish |
| ULTRACEMCO | 10615.2 | 10916.1 | 10765.6 | 10679.5 | 10529.0 | 10442.9 | 11152.5 | 11465.8 | 68.3 | Bearish |
| VBL | 574.8 | 599.2 | 587.0 | 579.1 | 566.9 | 559.0 | 600.4 | 626.8 | 57.3 | Bearish |
| VEDL | 413.7 | 435.0 | 424.3 | 418.2 | 407.5 | 401.4 | 435.9 | 459.4 | 43.6 | Bearish |
| VOLTAS | 1591.9 | 1684.5 | 1638.2 | 1607.7 | 1561.4 | 1530.8 | 1705.5 | 1744.9 | 43.5 | Bearish |
| WHIRLPOOL | 1595.1 | 1730.0 | 1662.6 | 1621.3 | 1553.9 | 1512.6 | 1692.5 | 1830.5 | 66.0 | Bearish |
| WIPRO | 291.9 | 302.8 | 297.3 | 293.8 | 288.3 | 284.8 | 295.3 | 302.5 | 47.5 | Bearish |
| YESBANK | 17.1 | 18.2 | 17.7 | 17.4 | 16.8 | 16.5 | 18.3 | 19.5 | 40.8 | Bearish |
| ZEEL | 119.2 | 129.5 | 124.4 | 121.4 | 116.3 | 113.3 | 128.1 | 126.9 | 35.9 | Bearish |
| ZOMATO | 227.2 | 245.5 | 236.3 | 231.3 | 222.1 | 217.1 | 243.6 | 271.2 | 51.9 | Bearish |
| ZYDUSLIFE | 975.1 | 1011.4 | 993.3 | 979.8 | 961.6 | 948.1 | 994.5 | 978.4 | 59.7 | Bearish |



Disclaimer:

This report has been prepared by HDFC Securities Ltd and is solely for information of the recipient only. The report must not be used as a singular basis of any investment decision. The views herein are of a general nature and do not consider the risk appetite or the particular circumstances of an individual investor; readers are requested to take professional advice before investing. Nothing in this document should be construed as investment advice. Each recipient of this document should make such investigations as they deem necessary to arrive at an independent evaluation of an investment in securities of the companies referred to in this document (including merits and risks) and should consult their own advisors to determine merits and risks of such investment. The information and opinions contained herein have been compiled or arrived at, based upon information obtained in good faith from sources believed to be reliable. Such information has not been independently verified and no guaranty, representation of warranty, express or implied, is made as to its accuracy, completeness or correctness. All such information and opinions are subject to change without notice. Descriptions of any company or companies or their securities mentioned herein are not intended to be complete. HSL is not obliged to update this report for such changes. HSL has the right to make changes and modifications at any time.

This report is not directed to, or intended for display, downloading, printing, reproducing or for distribution to or use by, any person or entity who is a citizen or resident or located in any locality, state, country or other jurisdiction where such distribution, publication, reproduction, availability or use would be contrary to law or regulation or what would subject HSL or its affiliates to any registration or licensing requirement within such jurisdiction.

If this report is inadvertently sent or has reached any person in such country, especially, United States of America, the same should be ignored and brought to the attention of the sender. This document may not be reproduced, distributed or published in whole or in part, directly or indirectly, for any purposes or in any manner.

Foreign currencies denominated securities, wherever mentioned, are subject to exchange rate fluctuations, which could have an adverse effect on their value or price, or the income derived from them. In addition, investors in securities such as ADRs, the values of which are influenced by foreign currencies effectively assume currency risk. It should not be considered to be taken as an offer to sell or a solicitation to buy any security.

This document is not, and should not, be construed as an offer or solicitation of an offer, to buy or sell any securities or other financial instruments. This report should not be construed as an invitation or solicitation to do business with HSL. HSL may from time to time solicit from, or perform broking, or other services for, any company mentioned in this mail and/or its attachments.

HSL and its affiliated company(ies), their directors and employees may; (a) from time to time, have a long or short position in, and buy or sell the securities of the company(ies) mentioned herein or (b) be engaged in any other transaction involving such securities and earn brokerage or other compensation or act as a market maker in the financial instruments of the company(ies) discussed herein or act as an advisor or lender/borrower to such company(ies) or may have any other potential conflict of interests with respect to any recommendation and other related information and opinions.

HSL, its directors, analysts or employees do not take any responsibility, financial or otherwise, of the losses or the damages sustained due to the investments made or any action taken on basis of this report, including but not restricted to, fluctuation in the prices of shares and bonds, changes in the currency rates, diminution in the NAVs, reduction in the dividend or income, etc.

HSL and other group companies, its directors, associates, employees may have various positions in any of the stocks, securities and financial instruments dealt in the report, or may make sell or purchase or other deals in these securities from time to time or may deal in other securities of the companies / organizations described in this report. As regards the associates of HSL please refer the website.

HSL or its associates might have managed or co-managed public offering of securities for the subject company or might have been mandated by the subject company for any other assignment in the past twelve months.

HSL or its associates might have received any compensation from the companies mentioned in the report during the period preceding twelve months from the date of this report for services in respect of managing or co-managing public offerings, corporate finance, investment banking or merchant banking, brokerage services or other advisory service in a merger or specific transaction in the normal course of business.



HSL or its analysts did not receive any compensation or other benefits from the companies mentioned in the report or third party in connection with preparation of the research report. Accordingly, neither HSL nor Research Analysts have any material conflict of interest at the time of publication of this report. Compensation of our Research Analysts is not based on any specific merchant banking, investment banking or brokerage service transactions. HSL may have issued other reports that are inconsistent with and reach different conclusion from the information presented in this report. Research entity has not been engaged in market making activity for the subject company. Research analyst has not served as an officer, director or employee of the subject company. We have not received any compensation/benefits from the subject company or third party in connection with the Research Report.

Please note that HDFC Securities has a proprietary trading desk. This desk maintains an arm's length distance with the Research team and all its activities are segregated from Research activities. The proprietary desk operates independently, potentially leading to investment decisions that may deviate from research views.

HDFC securities Limited, I Think Techno Campus, Building - B, "Alpha", Office Floor 8, Near Kanjurmarg Station, Opp. Crompton Greaves, Kanjurmarg (East), Mumbai 400 042 Phone: (022) 3075 3400 Fax: (022) 2496 5066

Compliance Officer: Murli V Karkera Email: complianceofficer@hdfcsec.com Phone: (022) 3045 3600

For grievance redressal contact Customer Care Team Email: customer care@hdfcsec.com Phone: (022) 3901 9400

HDFC Securities Limited, SEBI Reg. No.: NSE, BSE, MSEI, MCX: INZ000186937; AMFI Reg. No. ARN: 13549; PFRDA Reg. No. POP: 11092018; IRDA Corporate Agent License No.: CA0062; SEBI Research Analyst Reg. No.: INH000002475; SEBI Investment Adviser Reg. No.: INA000011538; CIN - U67120MH2000PLC152193

Investment in securities market are subject to market risks. Read all the related documents carefully before investing.

Mutual Funds Investments are subject to market risk. Please read the offer and scheme related documents carefully before investing.

Registration granted by SEBI, membership of BASL (in case of IAs) and certification from NISM in no way guarantee performance of the intermediary or provide any assurance of returns to investors.